

Pacific Primary

A Nurturing and Creative School for Children

Pacific Primary has provided a dynamic learning environment for children since 1974. The school continues to offer a loving, child-centered setting with an emphasis on the creative arts and learning experiences that nurture self-confidence and self-expression. Pacific Primary celebrates diversity: ethnic, racial, cultural, economic, and all types of families including adoptive, gay, lesbian and single-parent.

A Place for Families with Working Parents

Pacific Primary was designed to meet the needs of working parents. The school operates year round from 7:00 A.M. to 6:30 P.M. The tuition allows for flexibility of hours and is not prorated.

Parents are a vital and valued part of the Pacific Primary community. We want parents to feel supported and welcome. Pacific Primary relies on parent involvement and requires as a minimum:

- Attendance at one Parent Meeting
- Attendance at one Maintenance Day
- Participation in all Fundraising Events
- Assistance with organizing two Fundraising Events.

Parents may visit at any time and we welcome families to contribute their talents and skills. We support open communication between parents and staff. Parent-Teacher conferences are offered twice a year. Teachers and the Director encourage parents to contact them whenever they have concerns or problems.

Parent Education Workshops are offered throughout the year.

Pacific Primary's Program

Pacific Primary has a team of talented and experienced teachers who are dedicated to the spirit and philosophy of the school. Pacific Primary provides excellent staff salaries and benefits.

Pacific Primary offers a curriculum that supports the whole child. Our curriculum is developmentally appropriate, challenging and open-ended so that each child can realize his or her potential. We place strong emphasis on the creative arts – music, movement, dramatic play and art. Specialists in these fields enhance the program on a daily basis by providing creative expression for small groups of children.

Our goal is to provide a caring, safe and fun setting for children. We encourage children to develop problem-solving skills and cooperation. Children may continue at Pacific Primary through kindergarten. Graduates of Pacific Primary move on successfully to both public and private elementary schools, well-prepared to meet the challenges of academic education.

Meals: Nutritious breakfast, hot lunch, and morning and afternoon snack are served. Our family-style meals include organic fruits, vegetables and grains.

Field trips: San Francisco's diverse environment is an important resource for our school. Classes explore the city through field trips, usually using public transportation.

Summer Program: Summer is a special time at Pacific Primary. Our summer program begins in June and includes two months of fun-filled field trips. We take excursions throughout the Bay Area on a chartered school bus with the support of parents and extra staff. There is an activity fee for the Summer Program.



Admissions

We seek a diverse population of children and parents for the Pacific Primary community.

Children must be 2½ and toilet-trained. We accept children through age 6.

Applications may be submitted prior to visiting the school or after the tour of the school. A nonrefundable application fee must accompany the child's application. Applications are accepted throughout the year and children may be accepted at any time there is an opening. Financial Assistance applications are available upon request.

Parent Orientation Meetings are designed to provide tours of the school and information about the school's philosophy, curriculum and program. These tours are scheduled in January and February in the mornings and are for parents only.

Family Meetings are held in February and March and are an opportunity for the child and family to visit the school together and meet with the Director.

Letters of acceptance are mailed at the end of March for our annual September enrollment.



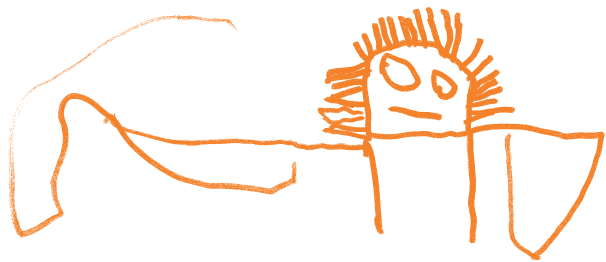


**A School with a History of
Commitment and Community
Involvement**

Pacific Primary, located in the culturally diverse Western Addition neighborhood, celebrated its 20th year in 1994. The school was founded by Mary Bodo, our first Director, and a group of parents who saw the need for a school with a strong creative arts curriculum and an extended day program. Today, that commitment to quality, creativity and diversity is the cornerstone of Pacific Primary's philosophy.

An Award-Winning School

Pacific Primary was chosen as one of the ten best daycare centers in America by *Child* magazine.



Pacific Primary

1500 Grove Street

San Francisco

California 94117

415 346 0906



Pacific
Primary

1500 Grove Street

San Francisco

California 94117

415 346 0906

fax 415 346 0960